

# FP1039/GSK3052230 With Chemotherapy in Squamous NSCLC or MPM Patients With Deregulated Fibroblast Growth Factor (FGF) Pathway

Pilar Garrido<sup>1</sup>, Ignacio Delgado<sup>2</sup>, Enriqueta Felip<sup>3</sup>, Manuel Domine<sup>4</sup>, Paul Paik<sup>5</sup>, Jose Trigo<sup>6</sup>, Emilie van Brummelen<sup>7</sup>, Shirish Gadgil<sup>8</sup>, Hedy Lee Kindler<sup>9</sup>, Primo Lara Jr.<sup>10</sup>, Sergey Orlov<sup>11</sup>, Johan Vansteenkiste<sup>12</sup>, Evgeny Levchenko<sup>13</sup>, Ulrik Lassen<sup>14</sup>, Santiago Viteri<sup>15</sup>, Julie Hambleton<sup>16</sup>, Katherine Baker-Neblett<sup>17</sup>, Li Yan<sup>18</sup>, Chenxi Wang<sup>18</sup>, Donna Sedoti<sup>18</sup>, Gray Kirby<sup>17</sup>, Ionel Mitrica<sup>18</sup>, Jeffrey Botbyl<sup>18</sup>, Daniel Morgensztern<sup>19</sup>

<sup>1</sup>Hospital Ramón y Cajal, Madrid; <sup>2</sup>Hospital Infanta Cristina, Badajoz; <sup>3</sup>Universitario Vall d'Hebron, Barcelona; <sup>4</sup>Fundación Jiménez Díaz, Madrid; <sup>5</sup>Memorial Sloan Kettering Cancer Center, New York, NY; <sup>6</sup>Hospital Virgen de la Victoria, Malaga; <sup>7</sup>Antoni van Leeuwenhoek Ziekenhuis, Amsterdam; <sup>8</sup>Karmanos Cancer Institute, Detroit, MI; <sup>9</sup>University of Chicago, Chicago, IL; <sup>10</sup>University of California, Davis Medical Center, Sacramento, CA; <sup>11</sup>Pavlov State Medical University, St Petersburg; <sup>12</sup>University Hospital Gasthuisberg, Leuven; <sup>13</sup>Petrov Research Institute of Oncology, St. Petersburg; <sup>14</sup>Rigshospitalet, Koebenhavn; <sup>15</sup>Hospital Univ. Quirón Dexeus, Barcelona; <sup>16</sup>Five Prime Therapeutics, San Francisco, CA; <sup>17</sup>GlaxoSmithKline, Research Triangle Park, NC; <sup>18</sup>GlaxoSmithKline, Philadelphia, PA; <sup>19</sup>Washington University School of Medicine in St. Louis, St. Louis, MO.



## P. GARRIDO DISCLOSURES:

Research funding from GlaxoSmithKline

Consultancy: Roche, Eli Lilly, Boehringer Ingelheim, Bristol-Myers Squibb, Pfizer, Astra-Zeneca

Speaking: Roche, Boehringer Ingelheim, Eli Lilly, Pfizer, Astra-Zeneca

Grant support: Eli Lilly, Sanofi-Aventis, Bristol-Myers Squibb, Astra-Zeneca

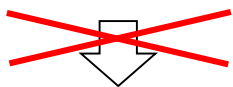
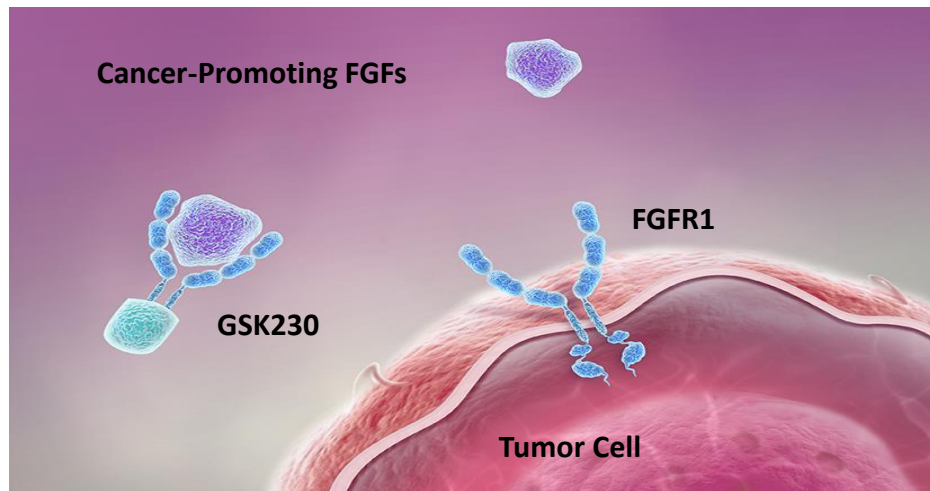
Travel Support: Roche, Eli Lilly, Boehringer Ingelheim, Bristol-Myers Squibb, Astra-Zeneca

Other disclosures: Baker-Neblett K is an employee of and own stock in GlaxoSmithKline; Botbyl J reports consultancy fees from GlaxoSmithKline; Delgado I reports no conflicts; Domine M reports no conflicts; Felip E reports consultancy fees from Eli Lilly, Pfizer, Roche, Boehringer Ingelheim, Merck Sharp & Dohme, Bristol-Myers Squibb; speaking fees from Astra Zeneca, Novartis; Gadgeel S reports no conflicts; Hambleton J is an employee of and own stock in Five Prime Therapeutics; Kindler HL reports research funding from GlaxoSmithKline; Kirby G reports employment as a contractor for GlaxoSmithKline and owns stock in FENNEC Pharmaceuticals; Lara P reports honoraria from Pfizer; consultancy fees from Janssen Pharmaceuticals, Clovis Oncology, US Diagnostic Services, Astex Pharmaceuticals, Exelixis, Immunogen, Pfizer, Teva, Medivation, Halozyme, Novartis, Sanofi, LPath, Lilly, Astra Zeneca, PER; research funding from Millennium, Polaris, Oncogenex, GlaxoSmithKline, Genentech, Aragon Pharmaceuticals, Janssen Biotech, Heat Biologics, TRACON Pharma, Merck; Lassen U reports research funding from GlaxoSmithKline; Levchenko E reports no conflicts; Mitrica I is an employee of GlaxoSmithKline; Morgensztern D reports consultancy fees from Celgene, Genentech; speaking fees from Boehringer Ingelheim; Orlov S reports no conflicts; Paik P reports research funding from Celgene; Sedoti D reports no conflicts; Trigo J reports no conflicts; van Brummelen F reports no conflicts; Vansteenkiste J reports no conflicts; Viteri S reports no conflicts; Wang C reports personal fees from GlaxoSmithKline; Yan L is an employee of GlaxoSmithKline.





# GSK3052230 Selectively Blocks FGFR1 Ligands

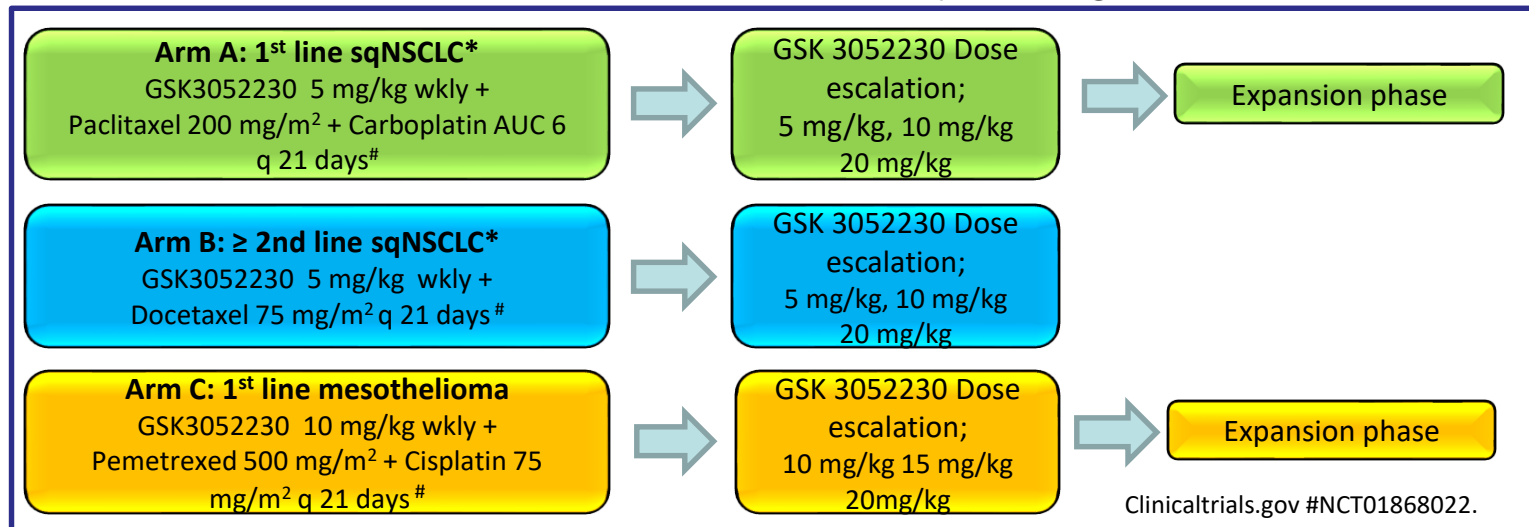


Tumor cell growth  
Tumor cell survival

- Selectively blocks cancer-promoting FGFs that bind to FGFR1
- Avoids retinal detachment, hyperphosphatemia, mucositis, and nailbed changes seen with small molecule TKIs
- MPM frequently overexpress FGF2 and ~20% of sqNSCLC show *FGFR1* amplification that is associated with diminished survival



## FGF117360: Study Design



### Primary objectives:

- Evaluate the maximum tolerated dose (MTD) or maximum feasible dose (MFD) of GSK3052230 in combination with chemotherapy
- Safety and tolerability of GSK3052230 (Dose limiting toxicities [DLTs], rate and severity of adverse events)

**Global study:** 34 centers in 8 countries (USA, UK, Russia, Spain, France, Netherlands, Denmark, Belgium)

\*FGFR1 gene amplification required. #Regimens as of Socinski et al, 2012 (Arm A); Hanna et al, 2004 (B); Vogelzang et al, 2003 (C).

# Treatment Summary and Primary Objective

Data as of 05Aug2015

- 176 patients with 1L or 2L+ sqNSCLC tested centrally for *FGFR1* amplification; 34 (19%) amplified
- 44 patients enrolled into the study: 18 Arm A, 7 Arm B, 19 Arm C
- Three DLTs
  - All were reported in mesothelioma patients (Arm C, dose level = 20 mg/kg)
  - NCI CTCAE Gr 5 bowel perforation/ischemia; Gr 3 elevated creatinine levels; Gr 3 infusion reaction
- Arm A: an MTD was not identified; 20 mg/kg IV weekly GSK3052230 was considered MFD
- Arm B: dose escalation is ongoing
- Arm C: MTD was established at 15 mg/kg IV weekly GSK3052230



## Treatment-emergent adverse events regardless of causality that occur in >33% of patients of any arm

Adverse Event	Arm A (n=18)		Arm B (n=7)		Arm C (n=19)	
	All grades	Grade 3-4	All grades	Grade 3-4	All grades	Grade 3-4
Neutropenia	<b>11 (61%)</b>	8 (44%)	2 (29%)	0	2 (11%)	1 (5%)
Anemia	<b>6 (33%)</b>	1 (6%)	0	0	4 (21%)	1 (5%)
Constipation	<b>7 (39%)</b>	0	2 (29%)	0	6 (32%)	0
Diarrhea	<b>7 (39%)</b>	2 (11%)	2 (29%)	1 (14%)	5 (26%)	0
Nausea	<b>6 (33%)</b>	0	2 (29%)	0	<b>12 (63%)</b>	0
Vomiting	4 (22%)	0	1 (14%)	0	<b>7 (37%)</b>	0
Decreased appetite	5 (28%)	0	1 (14%)	0	<b>9 (47%)</b>	0
Pyrexia	4 (22%)	0	<b>3 (43%)</b>	0	3 (16%)	0
Fatigue	<b>6 (33%)</b>	1 (6%)	2 (29%)	0	6 (32%)	1 (5%)
Asthenia	5 (28%)	2 (11%)	1 (14%)	0	<b>7 (37%)</b>	0
Alopecia	<b>7 (39%)</b>	0	<b>3 (43%)</b>	1 (14%)	0	0
Infusion related reaction	3 (17%)	0	1 (14%)	0	<b>7 (37%)</b>	1 (5%)

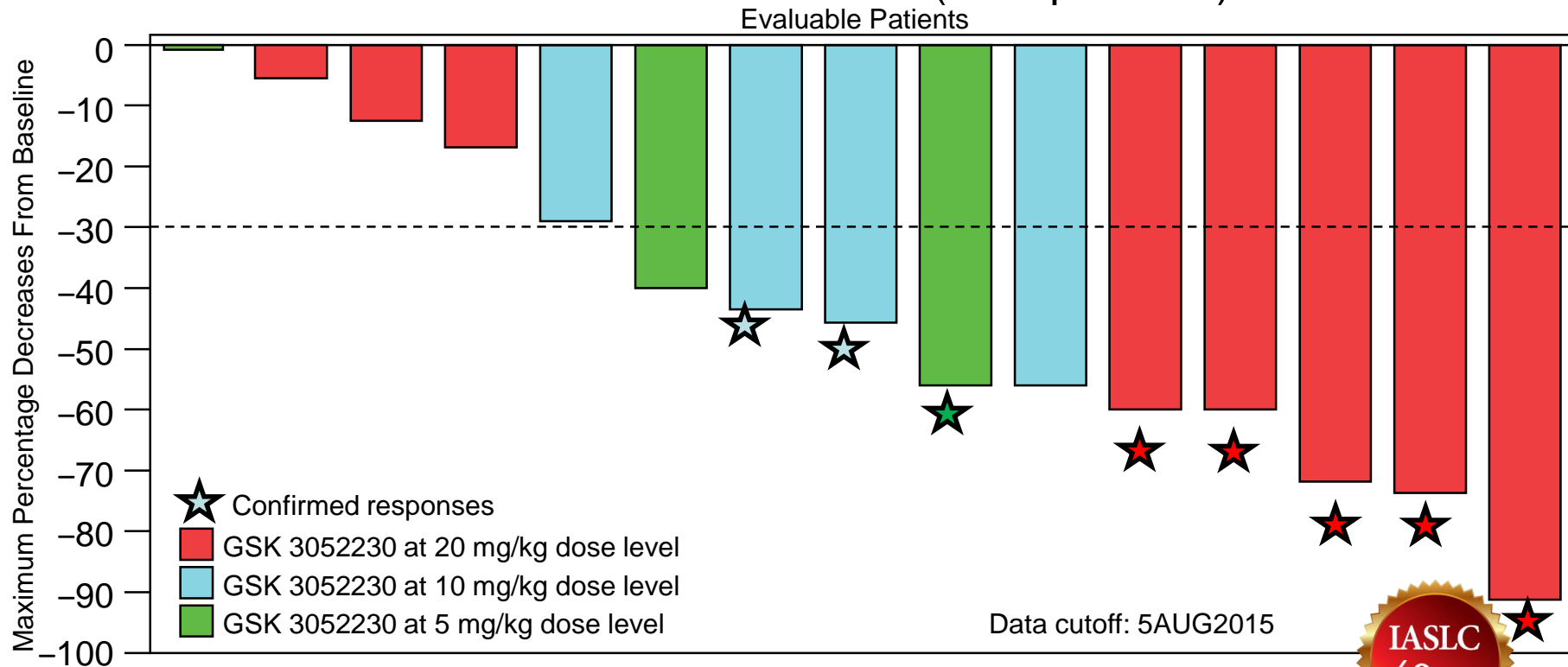
## Preliminary Efficacy

Best tumor response	Arm A (1L sqNSCLC): Paclitaxel + carboplatin +GSK3052230 (n=18)	Arm B (2L+ sqNSCLC): Docetaxel + GSK3052230 (n=7)	Arm C (1L MPM): Pemetrexed + cisplatin + GSK3052230 (n=19)
Partial response	10*	0	3
Stable disease	3	4	5
Progressive disease	2	1	1
Not evaluable	3	2	10
ORR	55%	0%	16%
Disease Control Rate (CR +PR +SD)	72%	57%	42%

\*Includes 2 unconfirmed responses. Not evaluable includes subjects without post-baseline scan, eg enrolled recently.

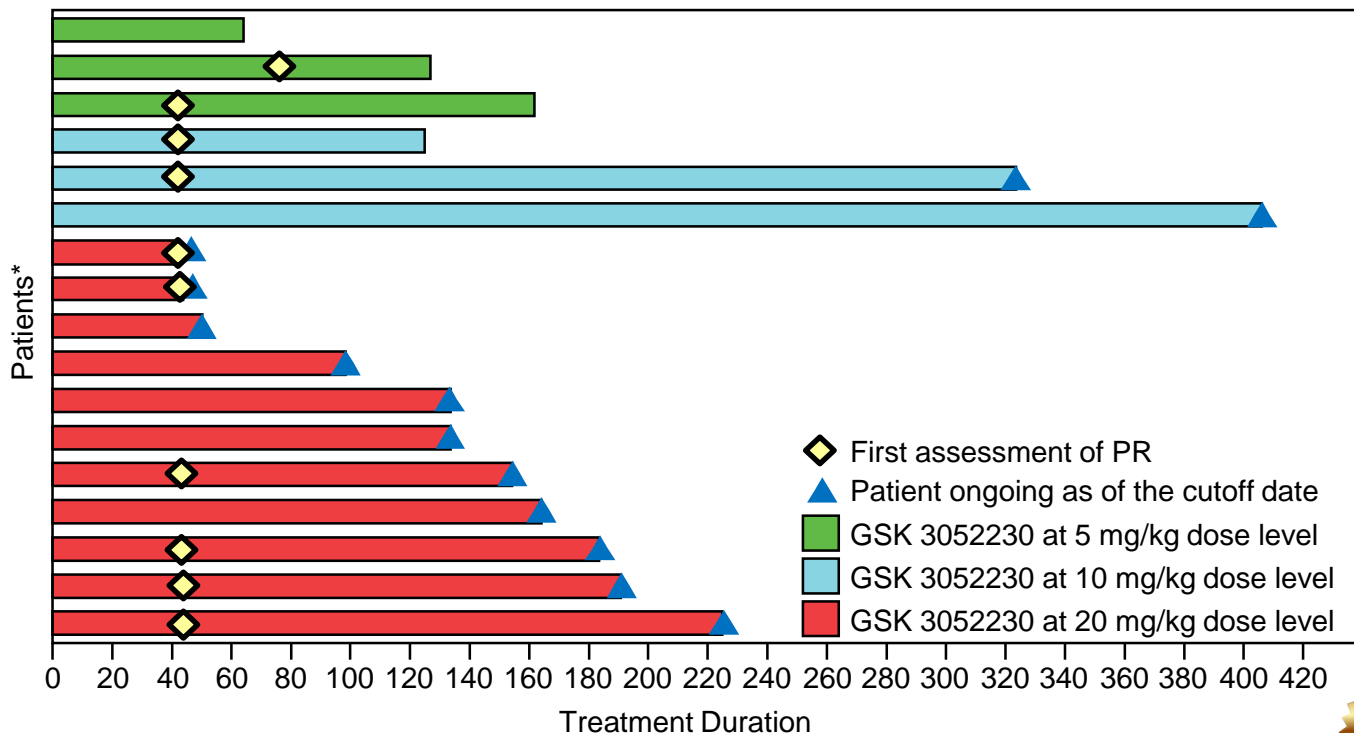


# Tumor Reduction in Arm A (1L sqNSCLC)





### Duration of Treatment in Arm A (1L sqNSCLC)



\* Data cutoff: 5AUG2015;  
data were incomplete/not available for 1 patient.



## TAKE HOME MESSAGES

- GSK3052230 is generally well tolerated in combination with chemotherapy (CT)
- 3 DLTs for GSK3052230 in combination with CT were found at dose of 20 mg/kg IV weekly only in Arm C; 20 mg/kg was considered MFD in Arm A and an MTD was established at 15 mg/kg in Arm C
- The most common toxicities were neutropenia and nausea; toxicities typically associated with small-molecule FGFR inhibitors namely hyperphosphatemia and retinal, nail, and skin changes, were not observed
- Approximately 20% of patients with sqNSCLC tested positive for *FGFR1* gene amplification
- In Arm A, overall response rate was 55% and disease control rate 72%, with good durability of response
- The initial activity and safety profile of GSK3052230 warrant further study

Thank you to the patients, families, communities and FGF117360 investigator site and team. This study was funded by GlaxoSmithKline; NCT01868022. Medical editorial assistance was provided by Nicholas Cianciola, PhD, of ProEd Communications, Inc., Beachwood, Ohio, USA, and was funded by GlaxoSmithKline.

